

The mountain area presents a picturesque culture full of vernacular building heritage in its uniqueness where masonry thrives at the bottom floor and log timber contrasts at top. Where building guidelines intend to preserve that character in reality it is often misinterpreted as surface cosmetics. The "officehome" aims to reinvent the authenticity of the mountain dwelling culture through contemporary prefabricated stereotomic technology. Insulated Sandwich Concrete panels endorse the masonry bottom on which the Cross Laminated Timber (CLT) top floor actively sits. The CLT is insulated, sheathed, and secured by a lattice of Thermally Modified Poplar (TMT) wood. Bioclimatic hominess is provided through the multi-sensorial , thermally active raw structure creating a harmony for the women architects who balanced "worklive" with their young children.



project addressing the societal challenge of balancing work and life for architects as mothers (here Theresa:5,Julian: 4,Lorenz: 3)



the vernacular dwelling type



tradition of stucco / plaster ground floor and solid timber / log top floor – having become the prescriptive local design guideline for new residential construction



leading to an illusion of heritage preservation as surface decoration

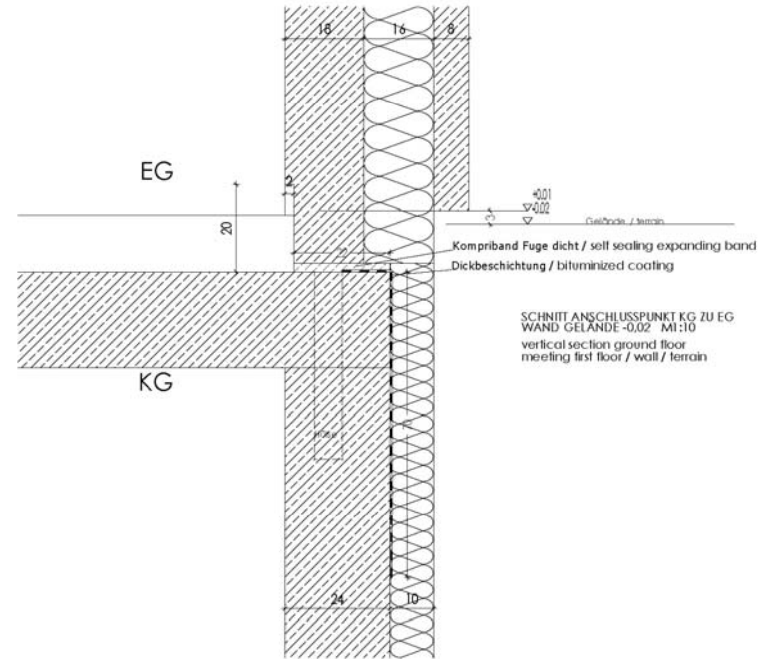
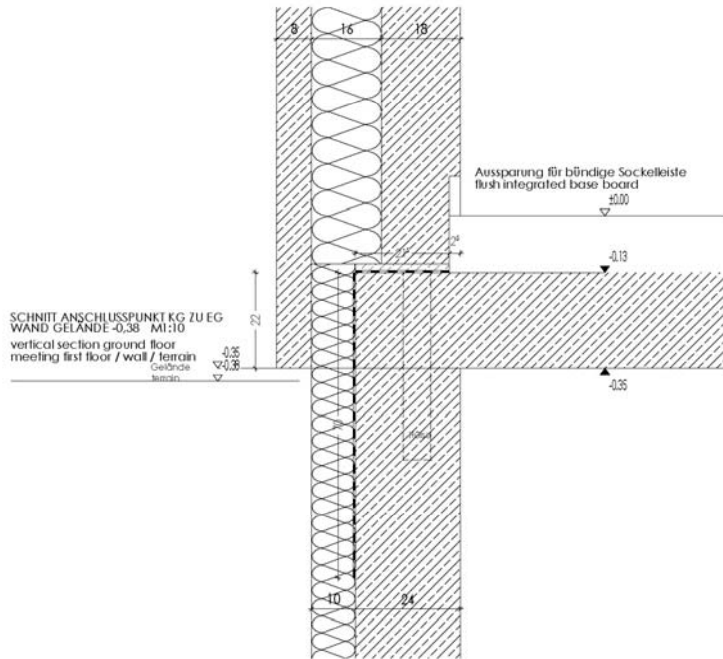
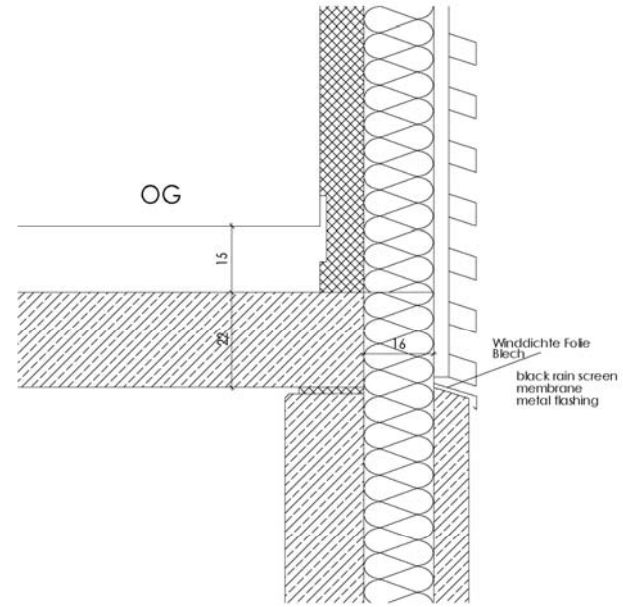
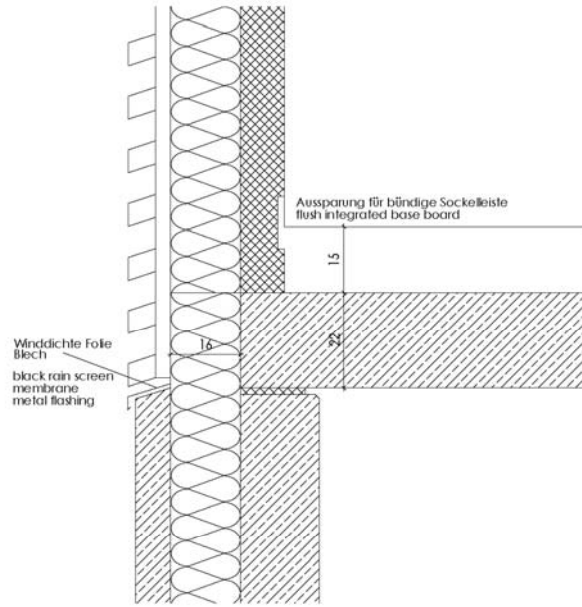




framing the old through the new



innovating the ground floor tradition of stereotomics , by cross culturally looking at Schindler´s King Road House / Hollywood 1922





adapting for the 21st century with prefabricated insulated sandwich (tilt up) panels



monolithic wedged corners

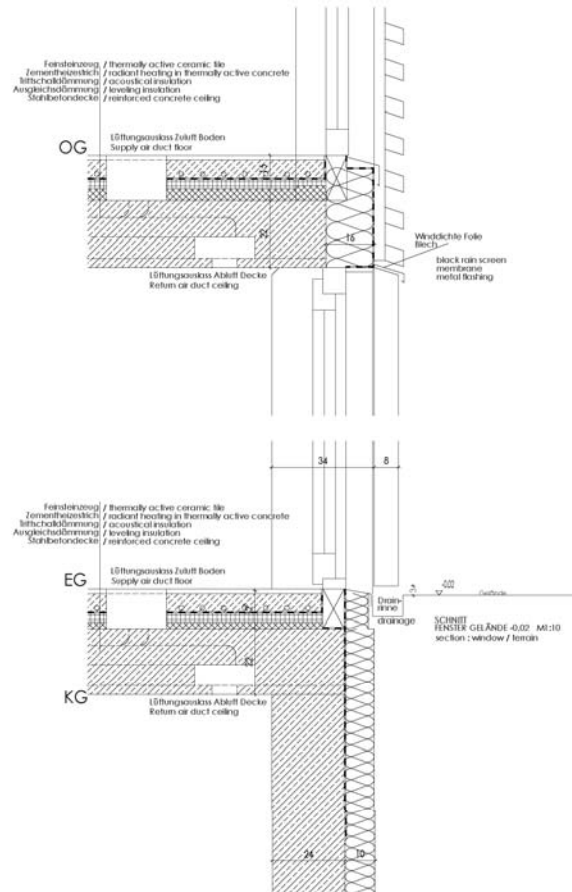
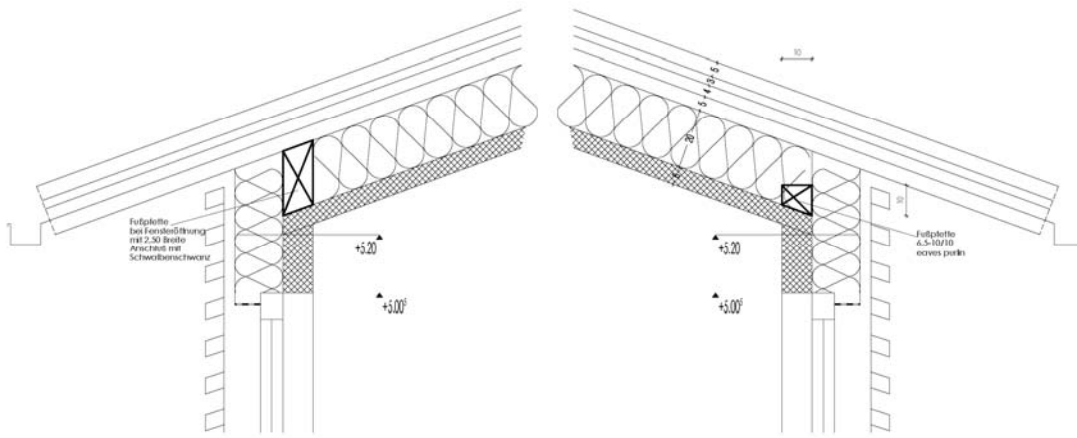


motivation to reintroduce the traditional solid timber tectonics for the top floor



in form of CLT (Cross Laminated Timber)





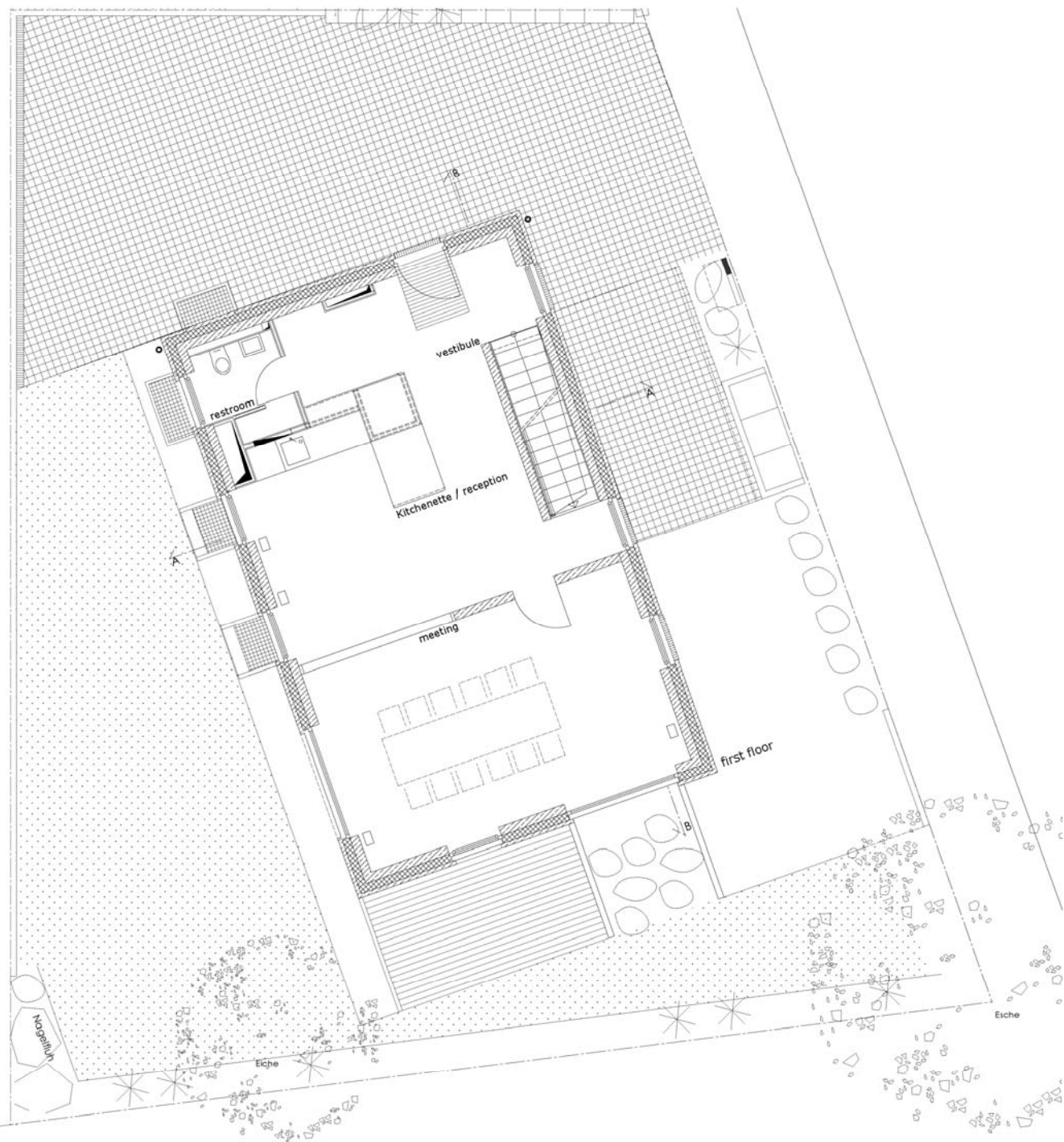


prefabricated



positioned





ground floor





thermally massing surfaces



differentiation between board and smooth form cast



walls as daylit space making devices



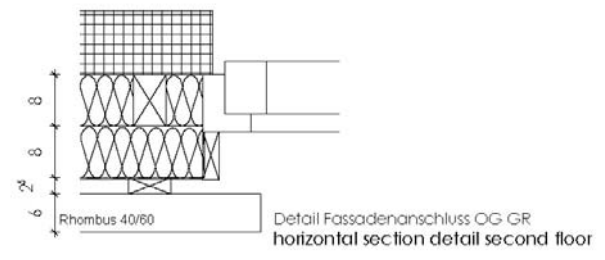


16 15





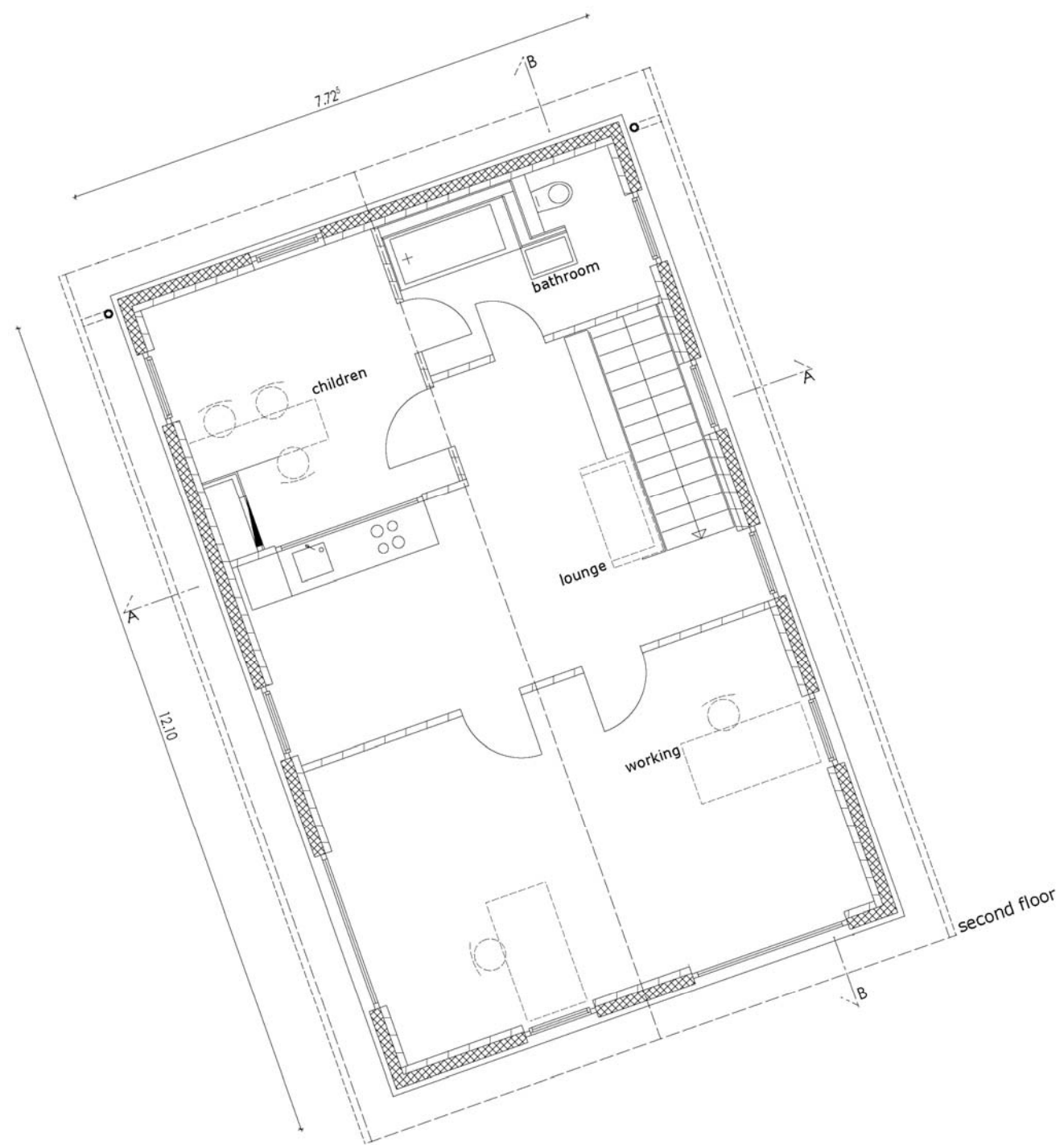






pointing up







case study CLT sauna house



solid wood on solid concrete





with open framed views



wall / roof precision fit



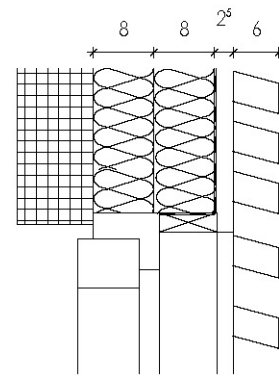
guaranteeing humidity controlling perfect indoor air quality





all wood components





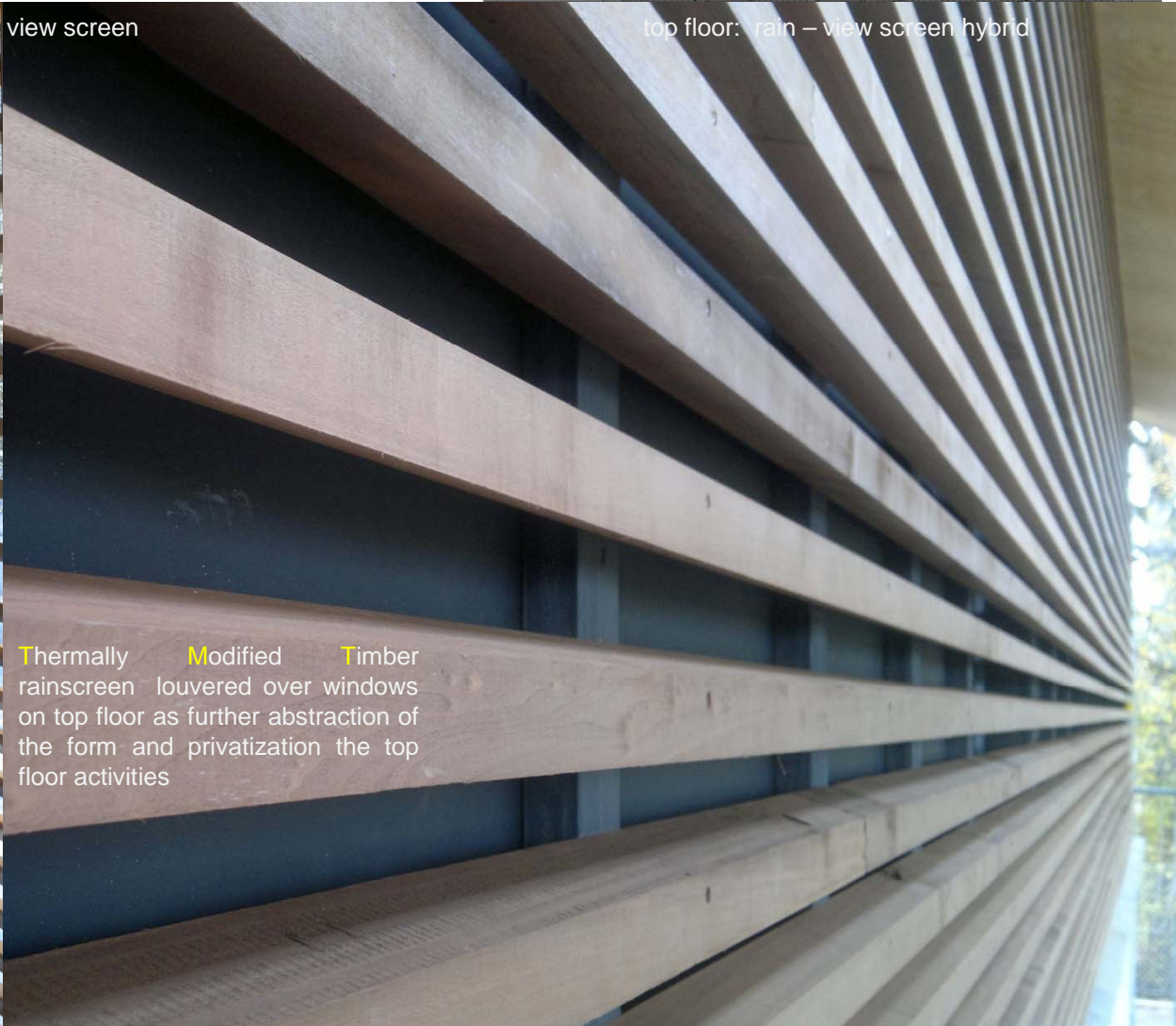
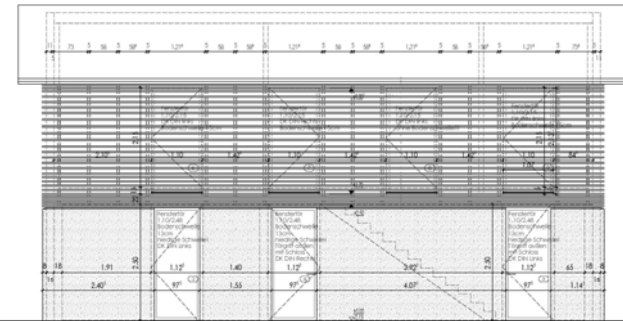
Detail Fassadenanschluss OG SN
vertical section lintel detail second floor





concrete as smooth as the required stucco / plaster





rain screen

view screen

top floor: rain – view screen hybrid

Thermally Modified Timber rainscreen louvered over windows on top floor as further abstraction of the form and privatization the top floor activities



tradition of innovation / innovation of tradition









and case study solved problem of female architects work / life balance





robust system able to adjust to changing cycles of life / shrink and grow in different parts of the dwelling and working aspects