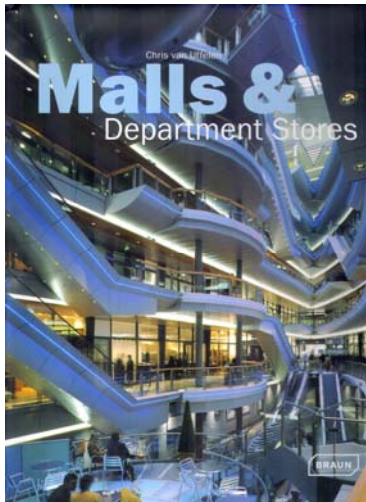


Project "Neighborhood Grocery Store" / publication in "Malls and Department Stores", Verlagshaus Braun, 2008



CONTENTS

• Preface

Outside

- 12 NorthPark Center
Ommiplan
- 18 The Pier Shops at Caesars
Elkus Manfredi Architects
- 22 Olympia Center Olomouc
Lqarchitects, Vladimír Paček
- 26 McArthur Glen Barberino
Designer Outlet
HYDEA srl
- 30 WESTside
Studio Daniel Libeskind, Burckhardt & Partner
- 32 Wertheim Village
JKDV Architects
- 36 Meydan – Umraniye Retail
Complex and Multiplex
Foreign Office Architects
- 40 The Village @ Park Royal
Mussion Cattell Mackey Partnership
and F+A Architects
- 44 EBI Square
Holzer Kobler Architekten
- 48 Villamoda
pierfrancesco Cravel
pfarchitects
- 52 Europark
Massimiliano Fuksas
- 56 Ingolstadt Village
JKDV Architects
- 60 Bursa wholesale greengrocer's and
fishmonger's market
Tuncer Cakmakli Architects

64 The Gateway Project
Snobetta

66 Mall of the Emirates
F+A Architects

70 H2OCIO
Chapman Taylor

76 RioSul Shopping
José Manuel Quintela da Fonseca

80 Bluewater
Eric R Kuhne & Associates

84 Plaza Norte 2
Chapman Taylor

Peripheral

- 92 StadtQuartier Riem Arcaden
Sergii Tchoban nps tchoban voss GbR
Architekten BDA, A. M. Prasch P. Sigl
S. Tchoban E. Voss
- 96 Outlet City Metzingen
Riehle + Partner
- 102 Kanyon
The Jerde Partnership
- 106 Schönbühl Center
Holzer Kobler Architekten
- 110 Hallen am Borsigturm
Vasconi Associés Architects
- 114 Centre Commercial des Chaises
Sabri Bendimerad, architect
- 118 Mellenwerk
RKW Rhode Kellermann Wawrowsky
Architektur + Städtebau
- 122 Field's
C. F. Möller Architects

126 The Blanchardstown Center
A & D Weichert & Partners, Architects

130 Plein '40-'45
OIII

132 Bercy Village
Valode & Pistre

136 ROMAEST
Chapman Taylor Architetti Milano

140 McArthurGlen Castel Romano
Designer Outlet
HYDEA srl

144 Principe Pio
RTKL Associates Inc.

148 Sainsbury's Superstore
Grimshaw

150 Arkadia
RTKL Associates Inc.

154 Omotesando Hills
Tadao Ando Architect & Associates

158 Triangle Town Center
Thompson, Ventulett, Stainback & Associates

162 Dolce Vita
Suttle Mindlin

166 Convenience Center "Große Franke"
Despang Architekten

170 Citygate
Fitch Design PTE LTD

172 VivoCity
Toyo Ito & Associates, Architects

176 Zhongnancun International
Shopping Mall
Zeidler Partnership Architects

180 SchwabenGalerie – City Center
Léon Wohlhage Wernik Architekten

186 Sainsbury's Local
Chetwood Associates

190 El Muelle de Santa Catalina
Chapman Taylor

194 Offices and shopping center
NAGELIARCHITEKTEN architectural office

198 Centro Vasco da Gama
José Manuel Quintela da Fonseca

202 Sello Commercial Center
Helin & Co Architects

206 Dolce Vita Coimbra
Sus Kay Architects

210 Warringah Mall
Altoun + Porter Architects, LLP

212 MPREIS branch stores
Various architects

Downtown

220 Selfridges Birmingham
Future Systems

226 De Citadel
Christian de Portzamparc

230 Galleria Hall West
UNStudio

234 Princesshay
Chapman Taylor

238 Karstadt
RKW Rhode Kellermann Wawrowsky
Architektur + Städtebau

242 Multi Casa Dulsburg
BRT Architekten

244 De Klanderij
de Architekten Cie.

248 Sevens
RKW Rhode Kellermann Wawrowsky
Architektur + Städtebau

252 Galeria Kaufhof Alexanderplatz
Josef Paul Kleihues, Kleihues + Kleihues

256 Il Giulia
Chapman Taylor Architetti Milano

260 Ponte de Lima Municipal Market
José Guedes Cruz

264 PALLADIUM
PSP Pysall Stahrenberg & Partner

268 Magna Plaza
Hans Ruijsenaars Architecten

270 Twentec
Mei Architecten en stedenbouwers

274 Forum Shops at Caesars Palace
Dougall Design Associates, Inc., interior designers

278 Fleur d'Eau
magg / Valérie Justôme

282 New Department Store
in the Europa Center
Sergii Tchoban nps tchoban voss GbR
Architekten BDA, A. M. Prasch P. Sigl
S. Tchoban E. Voss

286 Queens Plaza
RTKL Associates Inc.

290 Stadtpalais Potsdam
RKW Rhode Kellermann Wawrowsky
Architektur + Städtebau

294 Walsall Waterfront
SMC Alsop Architects

298 Espace Coty
#04g

298 Friedrichstadtpassagen
Oswald Matthias Ungers, Henry Cobb of Pei,
Cobb, Freed & Partners, Jean Nouvel

304 Clarke Quay quarter
SMC Alsop Architects

308 Spazio
de Architekten Cie.

312 The Oracle
HaskoRi architects

316 Selfridges Co. Wonder Room
Klein Dytham architecture (KDA)

320 Westfield San Francisco Centre
RTKL Associates Inc.

324 ZLOTE TARASY
The Jerde Partnership

328 Münster Arkaden
Josef Paul Kleihues and Norbert Hensel,
Kleihues + Kleihues

332 Siam Paragon
RTKL Associates Inc. and Design 103 International

336 R3 ukishima / alcafe4
Klein Dytham architecture (KDA)

340 Langham Place
The Jerde Partnership

344 Shopping Center De Vlinder,
Vroom & Dreesman
UNStudio

346 La Cittadella
The Jerde Partnership

350 Denver Pavilions
ELS Architecture and Urban Design

354 Vershina Trade and Entertainment Center
(EEA) Erick van Egeraat

358 Le Triangle des Gares
Jean Nouvel

360 Victoria Wharf Mall
Louis Karol

362 Magazin Kenzo
Lena Pessoa / DeuxL

366 P&C department store
Renzo Piano Building Workshop

372 City 2
Atelier d'Art Urbain

376 Arena Mall
F+A Architects

380 MALL Q19
peterlorenzatellers

384 Kampff Commercial Center
Helin & Co Architects

388 Hollywood & Highland
Ehrenkrantz Eckstut & Kuhn, EEAK

392 Peek & Cloppenburg department store
Richard Meier

396 Namba Parks
The Jerde Partnership

400 ALEXA
José Manuel Quintela da Fonseca

404 Paseo Colorado
Ehrenkrantz Eckstut & Kuhn, EEAK

408 Bloomingdale's
Mancini Duffy

414 Architects Index

424 Picture Credits

424 Imprint



Convenience Center "Große Pranke"

Hanover

The new building replaces a convenience center built in the 1960's and whose infrastructure was rendered obsolete due to alterations in retail commerce. Discounter branches demanded standardized commercial space and normalized infrastructure, readily finding both in prefabricated homey gable-roofed houses. "Große Pranke" is a prototype of a counter-design, which can be cheaply built and maintained using the same logistics, but fits into the environment determined by modernity. Prefabricated concrete frame and fillings from frameless glass, grill elements and concrete sandwich fields are determined by material authenticity and balanced, inconspicuous forms. The high quality of all processing (roof insulation EPDM Bahn, Phoenix Resitrix) ensures expectation of a long life.

- ↑ | Exterior, delivery and skateboard ramp
- | Grill elements
- | Fillings
- ➔ | Front facing neighborhood heart

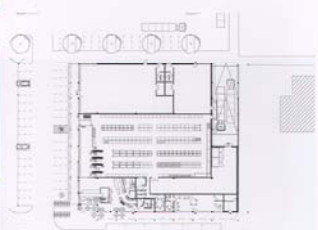
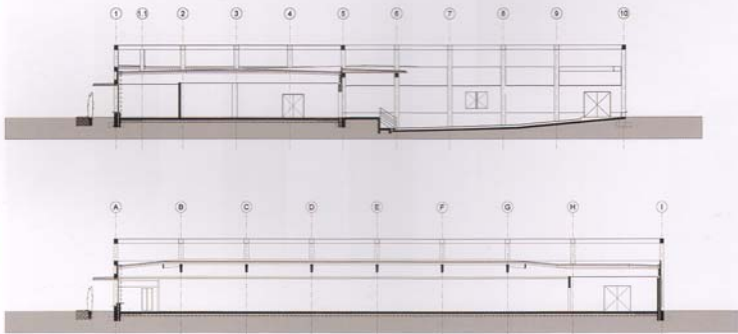
PROJECT FACTS

Address: Große Pranke 3, 30419 Hanover Marienwerder, Germany. Client: Hartmann und Wyludda Immobilien GbR. Period of construction: 2003–2004. Gross floor area: 2,150 m². Estimated visitors: approx. 1,500 per day. Structural engineering: Dr. Siegfried Burmester and Klaus Sellmann.





↑ | Integrated tenant signatures
 ✓ | Sections



← | Façade, detail brise soleils
 ↑ | Floor plan
 ↓ | Caddy box

