

1



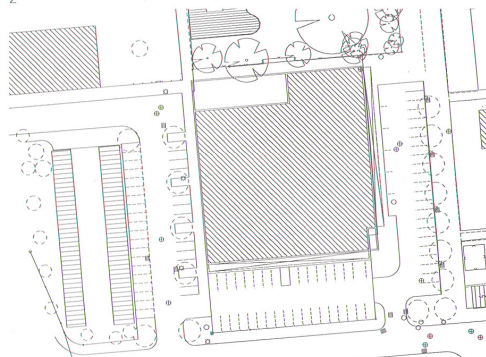
2



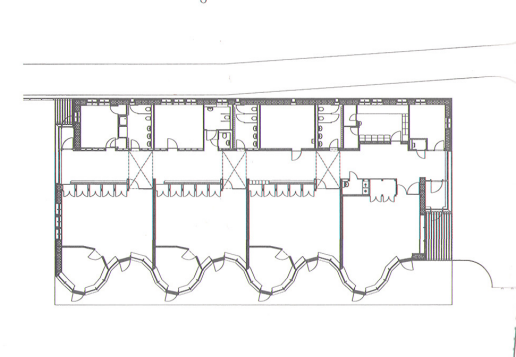
3



4



5



6

0540 The Postfossil Ecowoodbox Kindergarten is located in a typical 1950s suburban area in the city of Hannover, and replaces a prefabricated building from 1969. The new building occupies almost the same footprint as the previous structure, making use of the natural shading of mature trees on the site. The building is the first kindergarten in the city to meet the rigorous requirements of passive energy house standards, where the design of the building reduces the consumption of energy produced by fossil

fuels. The structure is a light wooden frame clad in prefabricated 40 cm (15.6 in) thick wall panels with pre-installed and glazed windows. The building sits on a slab above foam glass gravel. Facing south, a curved, fully triple-glazed facade maximizes solar heat gain, whereas the three other sides are covered in a highly insulated cladding of thermally modified timber. The north-facing elevation is formed of vertical wooden slats that blend with the natural colours and forms of the surroundings. The interior is lined with

birch plywood, with natural-coloured brown linoleum floors. The brief for the kindergarten spaces was developed in collaboration with its director, and the building accommodates around 70 children in three groups. The plan is designed around the activities of the children. Service spaces are arranged along the north wall, connected by a linear circulation system, which serves as a playstreet lit by skylights and a transition to the sunny playrooms facing south.

- 1 Exterior view
- 2 Detail of wooden slats
- 3 Detail of triple-glazed windows
- 4 View of the 'playstreet' and south-facing playrooms
- 5 Site plan
- 6 Ground-floor plan

Client
Hannover City
Area
658 m²/7,083 sq ft
Cost
€1,175,000
Coordinates
52.4048 9.6184