

Pehlke Apartments Redux / Hannover / Germany 2010

The 1960's are the last true era with a general consensus of mutually agreed building culture conventions. With the authoring generation aging this legacy seems to tend to vanish away, but at the same time as well a new generation starting to re-appreciate the notion of the 1960's ordinary average architecture.

The "Pehlke Apartments Redux" is a case study for reflection and rediscovery of this legacy by the means of transformative rejuvenation. Built by the architect Mr. Pehlke for his multigenerational family, his son became a lawyer and in memory and tribute to his dad in collaboration with the architects came up with a strategic plan of interventions to upgrade/date the building in order to equip it for the 21.(postfossil) Century for multidwelling apartment use.

New brick mosaic tiled baths, redone linoleum floors and kitchens, the acquiring of the formerly unutilized, uninsulated attic as a LOFT dwelling unit and the addition of outdoor TMT (Thermally Modified Timber) "deckspaces" for the apartments subtly continue the distinct architectural narrative as well as redefining it at the same time in a sense of a "hot rod"¹⁹ (Prof Chris Ford, Ryan Hendrickson) strategy.

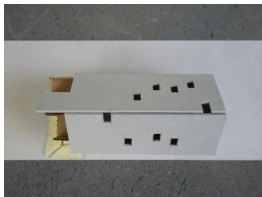
the given



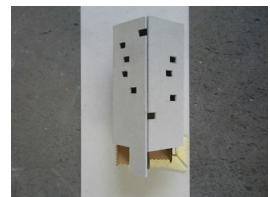
found inspirational textures



strategy: outdoor nesting



interventions



transformations



