

project : School for mentally disabled children, Garbsen /Germany 2002

healing space



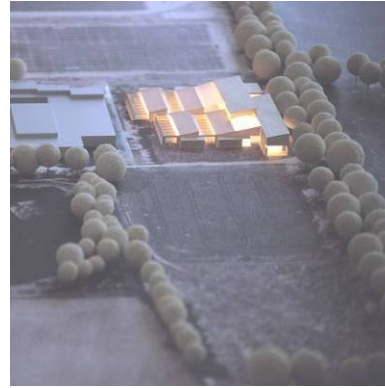
normality!?



incorporated exterior



fresh air patchwork



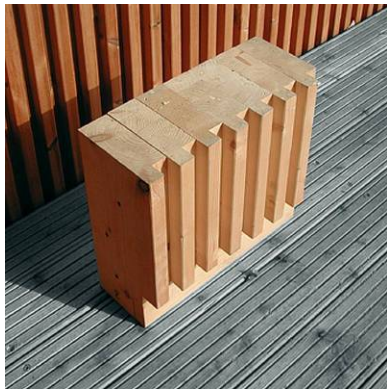
in grace



fresh inside protected by crusted bark



solid board staple tectonics



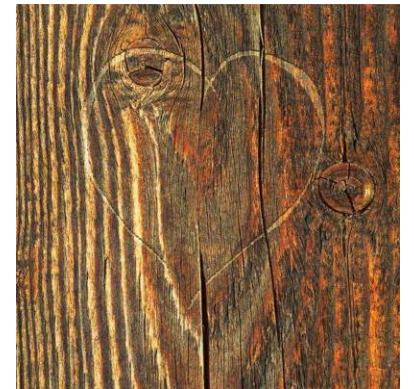
eco-mimicry

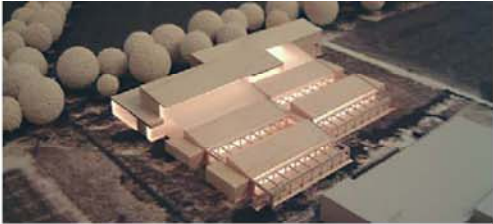


full scale convincing tactics



sympathetic friendship





Bauherr:
Region
Hannover
Hildes-
heimer
Str. 20
30169
Hannover

BGF
ca. 4000m²

Sonder-
schule

Sonder- und Berufshochschule, Garbsen - Projekt / Bau - 2000 / 2002



A patchworklike building- and landscape -structure as the hub of living space of approximately 100 mentally handicapped children and their 40 teachers. The building is passed through by courtyards of different uses , which filter and bind the immediate intervention of the surroundings: the building as a, concerning internal and external sensual impulses breathable organism. A structure, completely out of numerous shifted timberboards materialwise and constructively creates a general and durable texture with great sensual stimulance for a spot of the communicative human dialog.



KERN + HÜLLE

DESPANG ARCHITECTEN
Am Grödenweg 4
30169 Hannover
Tel. 0511 982640
despang@despang.de