



IT'S LIKE THIS EVERY DAY. WE'RE THE LUNCHTIME FREAKSHOW...

WATCH YER STEP, BURNOUT--!

HUHHHNN--!

YO... I GIVE IT AN EIGHT.

THANK YOU, THANK YOU...

AS YOU CAN SEE, I HAVE MANY TALENTS BOTH ON AND OFF THE FIELD...

REN'S LEARNED HOW TO BLOCK OUT THE RAIN OF INSULTS. I HAVEN'T.

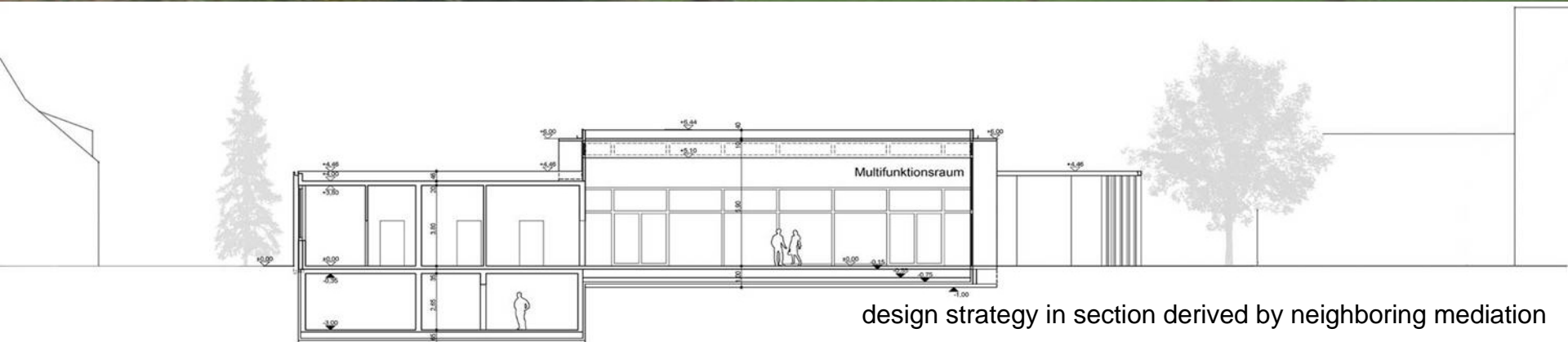


WELL, THAT SUCKED.

I KNEW IT'D BEEN TOO LONG SINCE I ENDURED SOME PHYSICAL ABUSE.

I REALLY HATE THOSE GUY'S...

common topological space related human activity



design strategy in section derived by neighboring mediation

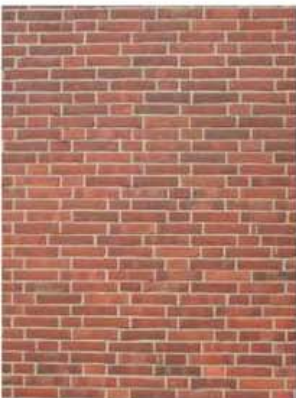


Schule

Schule

concluding a campus masterplan as space making

given local legacy



yellow sandy soil



precedent :



Mies promontory Apartments Chicago



concrete slab and floor



design parameters

micro sun-filters to the South / macro sun-breakers to the East as thermal regulators and culinary stimulators



sun-breakers first



roof-louvers next







gradually opening up









transparent solidity

solid transparency





customized thermal mass



wood softens concrete – concrete hardens wood



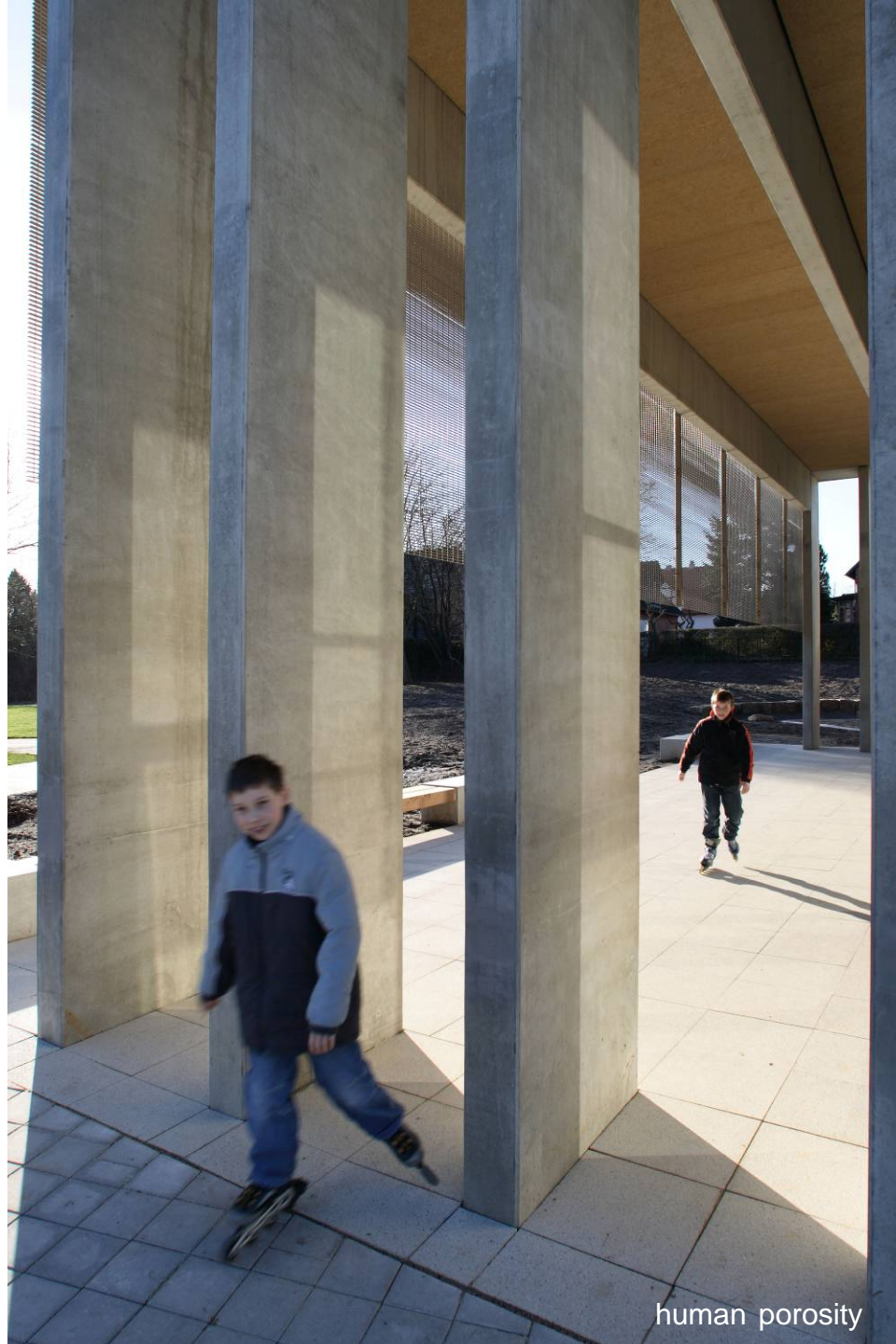
solid + void

the multifunctional campus lattice=structural,daylight optimizing,summer overheating protecting (East) ,socializing





southern solar lattice (winter gain / summer protection)



human porosity







*not the end*