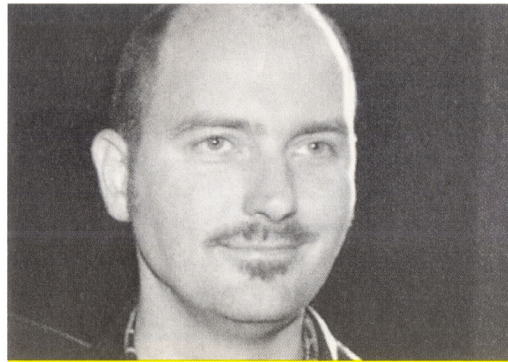




Architecture in Hannover



Martin Despang, Despang Architekten, Hannover

The Hannover architect Martin Despang, a young representative in the tradition of the 'Hannoversche Schule' and professor in Lincoln/Nebraska/USA writes on the global attitude of Hannover, the hometown to the contractworld.

"At the beginning of every year, Hannover becomes the centre of the architectural world through the contractworld.

One century ago the architects of the "Hannoversche Schule" have last taken Hannover's architecture into the world as a unified whole. Their virtues of distinctly authentic building have been passed on in the following generations with continuity, however with a varying intensity.

Global recognition was once again achieved in the 1950s/60s with the distinct ideal of the dynamic city. As "Next Generation" **Friedrich Lindau**, the

designer of the trade union tower block, and **Dieter Oesterlen**, designer of the historic museum, expressed the history together with many other colleagues in a charming, relaxed quality.

The adjoining school for the hearing impaired by **Dieter Quiram**, which is presently at risk, consistently and appropriately illustrates a distinct 1970s style.

In the 80s and early 90s external stimulations, such as **Axel Schultes'** church office and his Welfenplatz office park, introduced a metropolitan flair.

Hansjörg Göritz and his buildings (Horstkotte house, residential bar building in Bemerode and Nordstadt suburban railway station) exemplary represented Hanover taking up the virtues of the Hannoversche Schule in the 90s.

Simultaneously the reflection upon the architectural qualities of the "Gründer" projects of the "Hannoversche Schule" is exemplary documented with the reincarnation of the Altes Rathaus by **Dieter Neikes**.

Much heeded and published recent buildings, such as the Michaelis cloister in Hildesheim by **Wolfgang Pax/ Anja Brüning + Helmut Drewes/Martin Speth** and the national parliament in Liechtenstein by **Hansjörg Göritz**, confirm the constant exportability of the "traditional product Hannoversche Architekturschule", even in these times of expanding archi-cultural globalization."

Fotos: Olaf Baumann, Hannover



**Kreipe's Coffee Time, Rathenastr. 12, Hannover
Design: Despang Architekten, Hannover**

Whoever approached the World Exhibition site during the World Exhibition duration by tram, knows the tram stations by **Despang Architekten**. Whoever likes to enjoy a nice cup of coffee in a well designed environment in Hannover, gets to know the Kreipe's Coffee Time: Instead of traditional furnishings the fitments, such as bars and benches, are developed from the light-beige vinyl used as flooring and wall cladding, thereby supporting the linear spatial impression of the elongated, narrow ground floor.